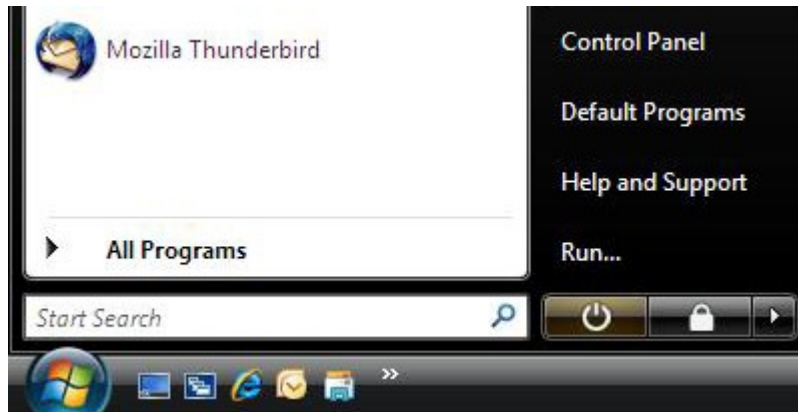


Kreiranje PPPoE konekcije - Windows Vista / Windows 7

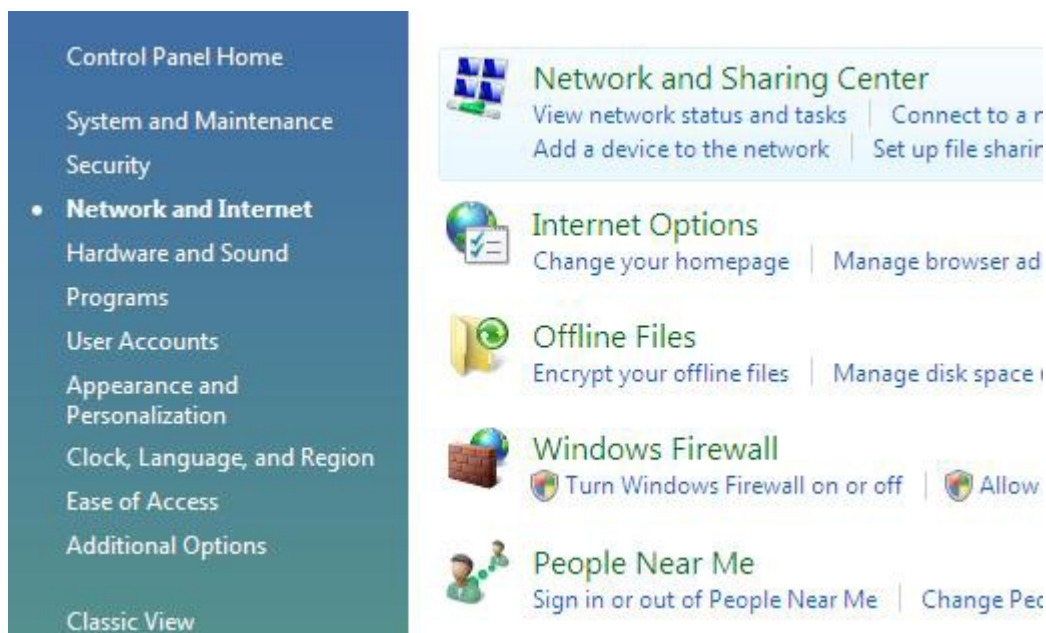
Kliknite na "Start" meni i izaberite "Control Panel".



U kontrolnom panelu izaberite "Network and Internet".



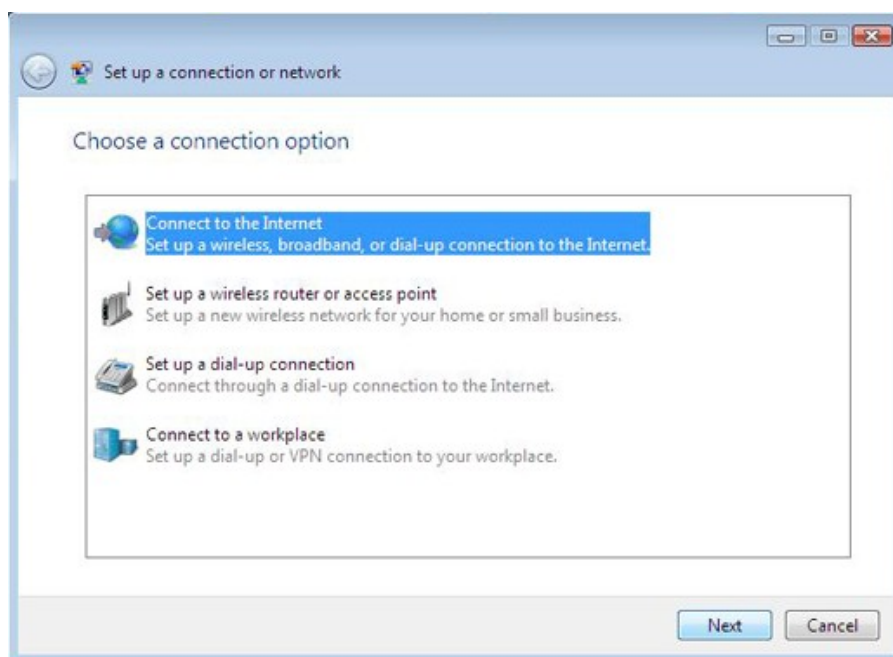
Iz "Network and Internet" kategorije, dva puta kliknite na "Network and Sharing Center".



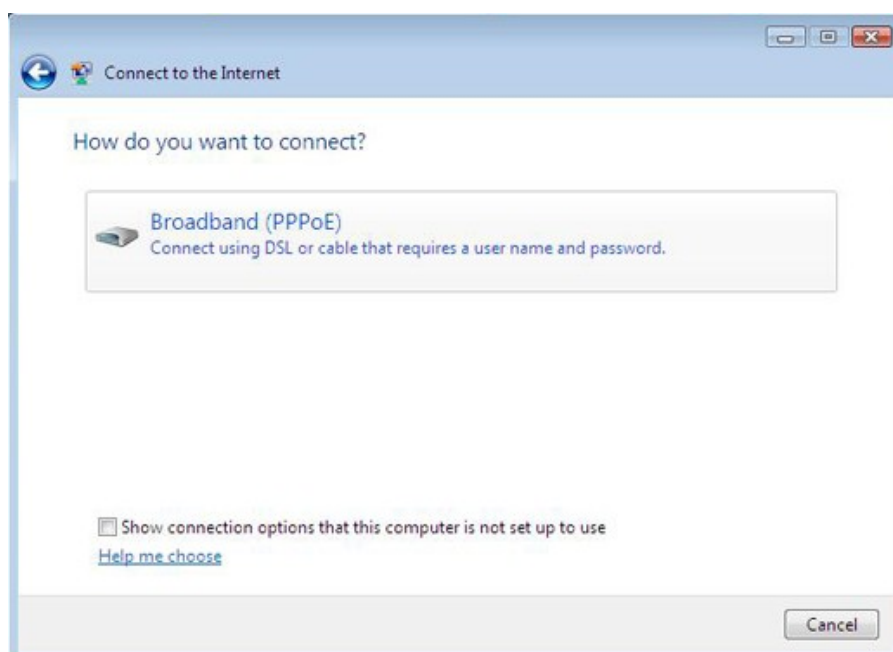
"Network and Sharing Center" ce vam dati prikaz i status vasih trenutnih mreza na racunaru. Da biste kreirali PPPoE novu konekciju, kliknite na "Set up a connection or network".



Izaberite "Connect to the Internet" zatim kliknite na "Next".



Odaberite nacin konektovanja "Broadband (PPPoE)".



Unesite svoje korisnicko ime (username) i lozinku (password). Mozete ukljuciti opciju "Show Characters" kako biste vidjeli koju lozinku unosite, zatim kada sve ispunite kliknite na "Connect".



Connect to the Internet

Type the information from your Internet service provider (ISP)

User name: korisnickoime

Password: ••••••••

Show characters

Remember this password

Connection name: DSLon Wireless

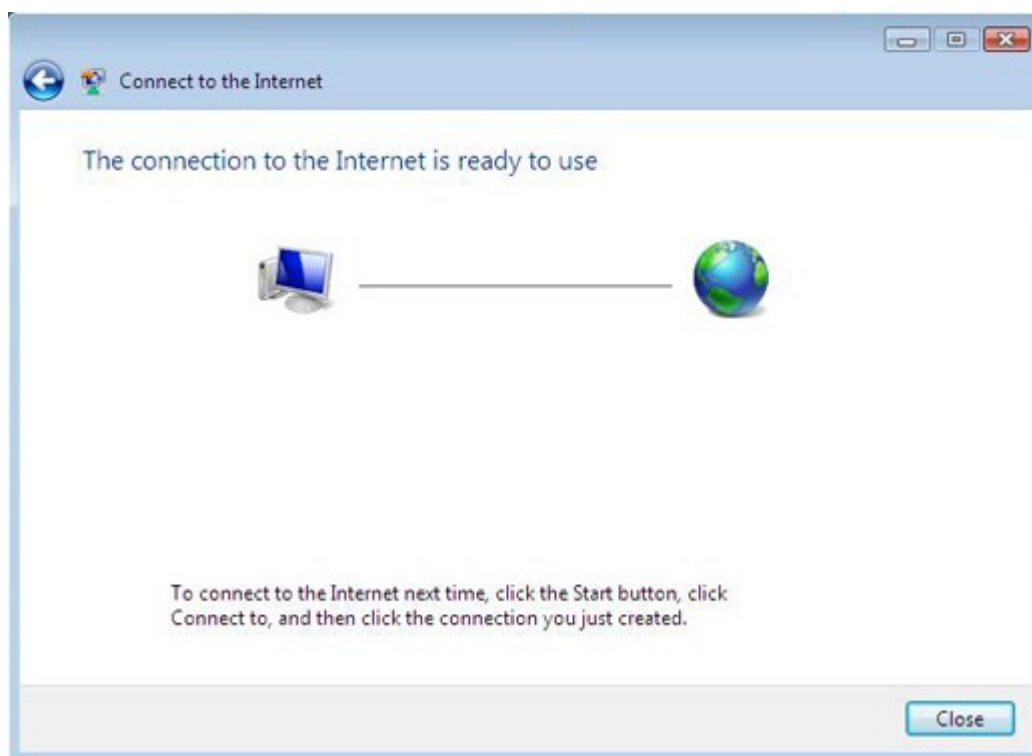
Allow other people to use this connection

[I don't have an ISP](#)

This option allows anyone with access to this computer to use this connection.

Connect Cancel

Windows ce automatski kreirati i pripremiti novu konekciju za Vas. Kliknite "Close" za nastavak.



Za sve nejasnoće, pomoć pri kreiranju konekcije i dodatne informacije kontaktirajte našu tehničku podršku na broj telefona **065/950-255**