

Kreiranje PPPoE konekcije - Windows XP

Kliknite na "Start" meni i izaberite "Control Panel"



Kontrol panel ce se otvoriti u nacinu "Category View". Izaberite kategoriju "Network and Internet Connections".



Iz "Network and Internet Connections", izaberite "Network Connections" ikonu.



Otvorite ce Vam se Kontrolni panel sa prikazom trenutnih mreza. Sa menija "Network Tasks" izaberite "Create a New Connection". Ukoliko nevidite meni "Network Tasks", kliknite gore lijevo na "File", zatim "Create a New Connection".



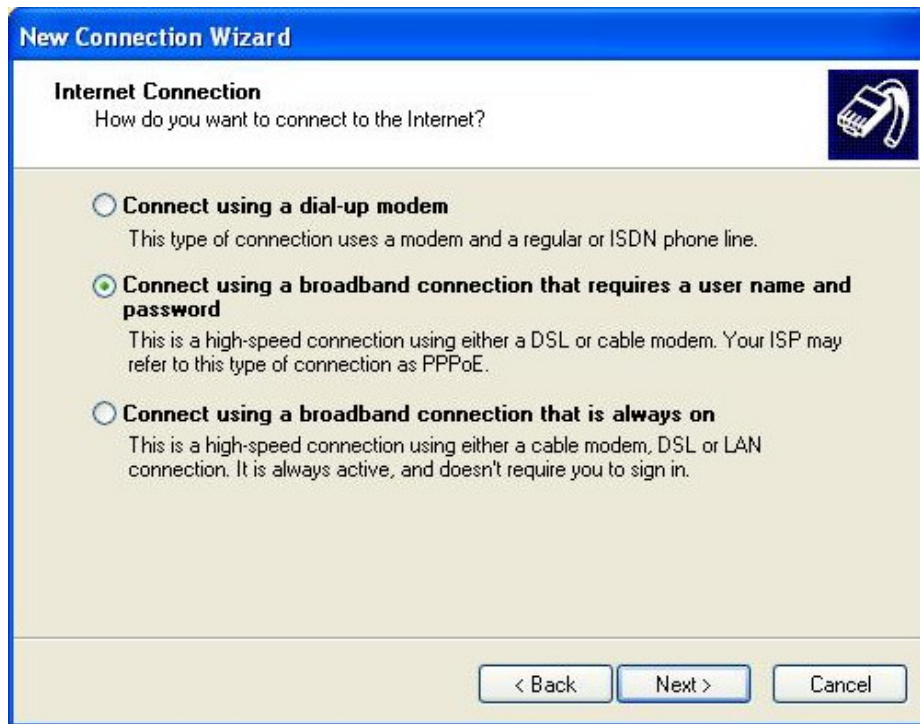
Otvorit ce Vam se "New Connection Wizard". Kliknite na "Next" za nastavak.



Standardno odabrano je "Connect to the Internet", ostavite tako. Kliknite "Next" za nastavak.



Standardno odabrano je "Connect using a dial-up modem". A vi odaberite "Connect using a broadband modem that requires a username and password". Kliknite "Next" za nastavak.



The screenshot shows the 'New Connection Wizard' dialog box with the title bar 'New Connection Wizard'. The main heading is 'Internet Connection' with the question 'How do you want to connect to the Internet?'. There are three radio button options: 'Connect using a dial-up modem', 'Connect using a broadband connection that requires a user name and password' (which is selected), and 'Connect using a broadband connection that is always on'. Each option has a brief description. At the bottom, there are three buttons: '< Back', 'Next >', and 'Cancel'.

Unesite željeni naziv za novu konekciju; naprimjer "DSLon Wireless". Kliknite "Next" za nastavak.



The screenshot shows the 'New Connection Wizard' dialog box with the title bar 'New Connection Wizard'. The main heading is 'Connection Name' with the question 'What is the name of the service that provides your Internet connection?'. Below the heading, it says 'Type the name of your ISP in the following box.' followed by 'ISP Name' and a text input field containing 'DSLon Wireless'. Below the input field, it says 'The name you type here will be the name of the connection you are creating.' At the bottom, there are three buttons: '< Back', 'Next >', and 'Cancel'.

U sljedeća polja pod "Internet Account Information", unesite potrebne informacije vezane za Vas nalog:

- Username: Unesite Vase korisnicko ime, naprimjer: *bojanmu*
- Password: Unesite Vasu lozinku
- Confirm password: Unesite Vasu lozinku ponovo
- Cekirajte u nastavku sljedeća dva polja

Kliknite "Next" za nastavak.



New Connection Wizard

Internet Account Information
You will need an account name and password to sign in to your Internet account.

Type an ISP account name and password, then write down this information and store it in a safe place. (If you have forgotten an existing account name or password, contact your ISP.)

User name:

Password:

Confirm password:

Use this account name and password when anyone connects to the Internet from this computer

Make this the default Internet connection

< Back Next > Cancel

Cekirajte polje oznaceno sa "Add a shortcut to this connection to my desktop". Ovo ce Vam omoguciti da se mozete povezivati preko kreirane precice na Vasem desktopu. Kliknite "Finish" za nastavak.



New Connection Wizard

Completing the New Connection Wizard

You have successfully completed the steps needed to create the following connection:

DSLon Wireless

- Make this the default connection
- Share with all users of this computer
- Use the same user name & password for everyone

The connection will be saved in the Network Connections folder.

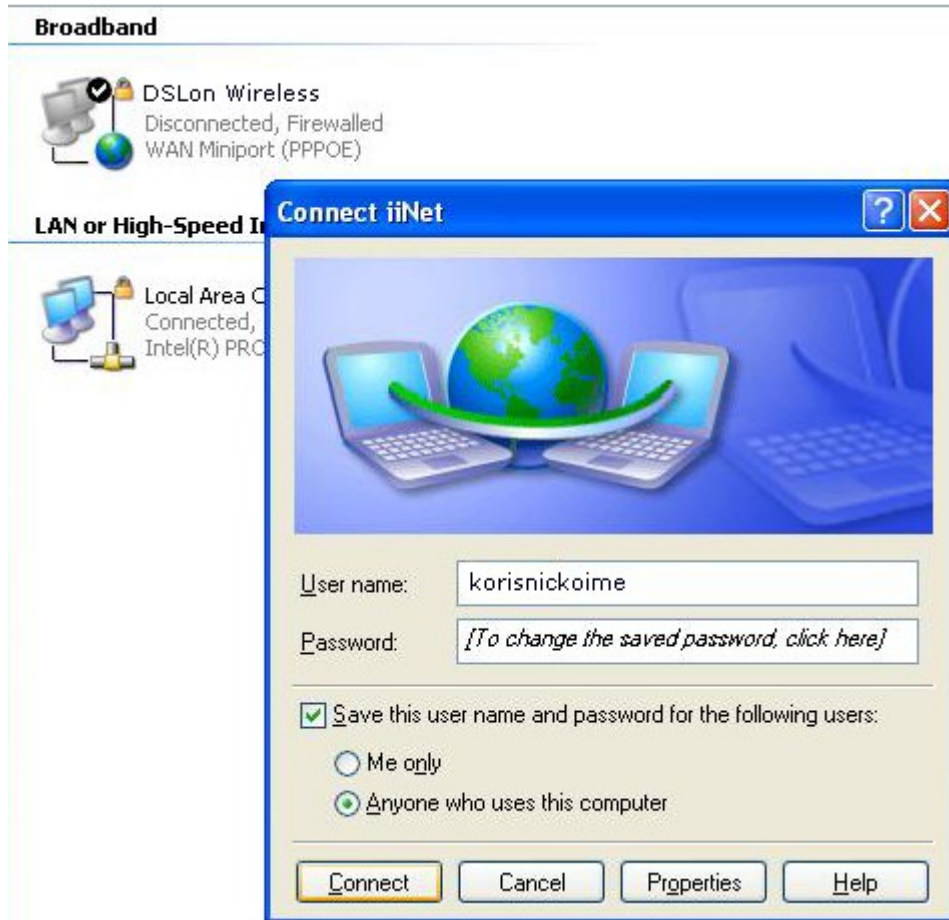
Add a shortcut to this connection to my desktop

To create the connection and close this wizard, click Finish.

< Back Finish Cancel

Prozor za konektovanje ce se otvoriti automatski sa unesenim imenom i lozinkom. Nimate potrebe da ponovo unesite podatke u polja; vec su sacuvani.

Kliknite "Connect" za pokretanje internet konekcije.



Od sada imate novu ikonu u "Network Connections" pod nazivom "DSLon Wireless" pod kategorijom "Broadband". Ovo je PPPoE konekcija koju ste predhodno kreirali.

Za sve nejasnoće, pomoć pri kreiranju konekcije i dodatne informacije kontaktirajte našu tehničku podršku na broj telefona **065/950-255**